



## **3 key tools to optimise employee office experience**

# In today's session we'll cover

Challenges encountered in the modern workplace

Key data points to leverage in strategic decision making

Why a modern booking tool is essential to optimise office productivity

The importance of air quality to enhance employee wellbeing

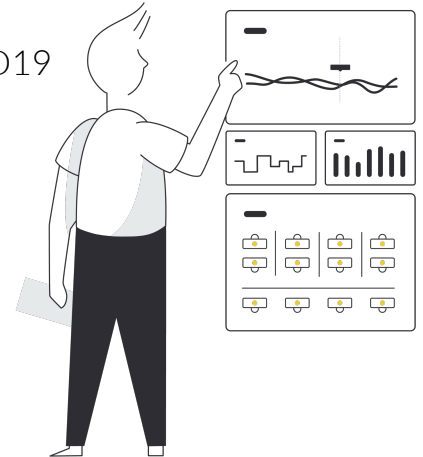
## Today's host



David Thomas  
Business Operations

# Frequent workplace challenges for employees working in flexible or hybrid environments

- Finding and reserving the appropriate spaces for private and collaborative work
- Managing a blend of remote and in-person meetings throughout the day
- Planning and scheduling the working week between the home and office
- Competition for limited and specialised assets throughout the office
- Assessing the health risk posed by indoor spaces and protecting oneself from COVID19



# Tool 1: Sensor-driven occupancy solution

## Drive next-gen workspace optimisation

Gather the data necessary to help you make better decisions when optimising work rotations, equipment utilisation and space planning by making purposeful and iterative changes to the workplace.



### Room Counter

Detects number of individuals in a space



### Footfall Counter

Counts number of people passing into or through an area



### Desk PIR

Detects heat and motion on individual assets

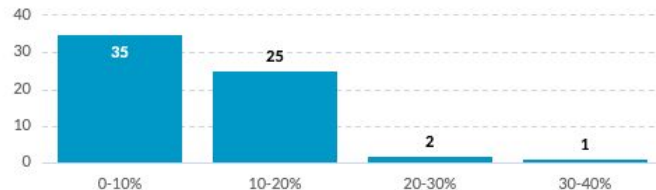
### Key metrics to examine:

- Meeting room occupancy levels
- Utilisation of assets by type, i.e. phone booths
- Daily trends in occupancy
- Trends in usage by departments or teams

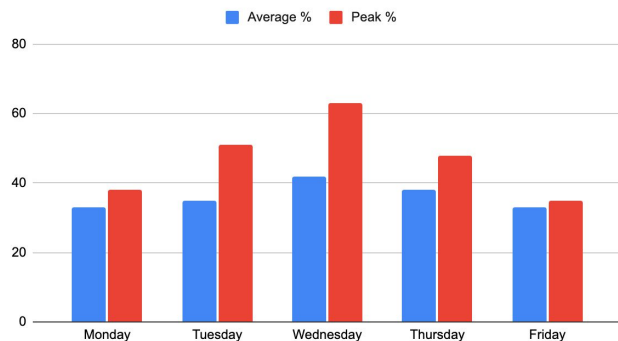
# Key metrics when balancing occupancy

## Identifying trends

Asset distribution based on avg utilisation



Desk Utilisation % - Daily Average vs Peak



### Rooms for 1

You have  
6 rooms for 1 people

6

We suggest  
8 rooms for 1 people

8

Based on sensor data

### Rooms for 2

You have  
6 rooms for 2 people

6

We suggest  
4 rooms for 2 people

4

Based on sensor data

### Avg seat utilisation by Workpoint-Type

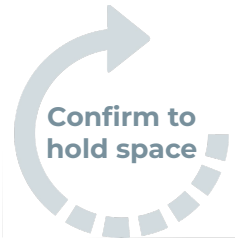
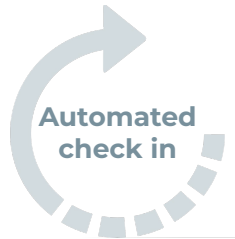
Workpoint-Type	Peak utilisation		Avg utilisation	
Collaboration Booth	49.0% +1.0%		5.0% +3.0%	
Collaborative Table	50.0% -2.0%		6.0% +0.0%	
Desk	38.0% +2.0%		10.0% +2.0%	
Informal Seating	49.0% -12.0%		6.0% +1.0%	
Social Seating	69.0% +0.0%		12.0% +2.0%	

Compare utilisation for each Workpoint-Type

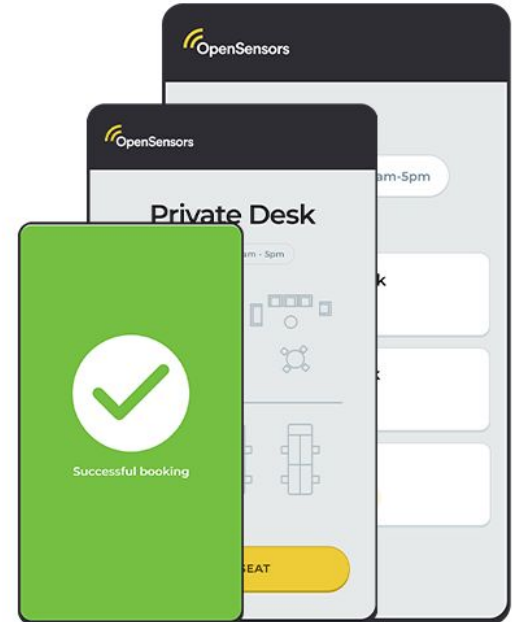
## Tool 2: An intelligent booking system

### Put employees in the driving seat

- Manage schedules in advance
- Find spaces well-suited to the task at hand
- Spread occupancy throughout the week with team or departmental settings
- Promote flexibility with easy edit and cancellation functions
- Planning and scheduling the working week between the home and office



[opensensors.com](https://opensensors.com)



# Tool 3: Environmental Sensors

Ensure ideal indoor air quality levels are maintained

Creating a safe working environment:

- Identify trends between occupancy and IAQ levels
- Optimise HVAC systems to provide sufficient fresh air
- Clearly communicate measures introduced to support wellbeing
- Respond immediately to spikes in poor IAQ



## Environmental

Monitors CO<sub>2</sub>,  
Temperature and  
Humidity levels



Temperature  
21°C



Relative Humidity  
40-60%



Carbon Dioxide  
300-500 ppm  
1000+ = Bad



# Our approach to gathering data

## A secure and flexible network

Understand how often workspaces or assets are being utilised

- Desks
- Focus rooms
- Meeting rooms

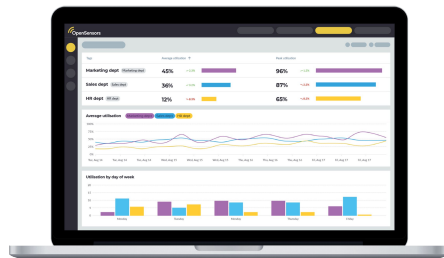


Understand the changes in indoor air quality data throughout the day



[opensensors.com](https://opensensors.com)

Encrypted data



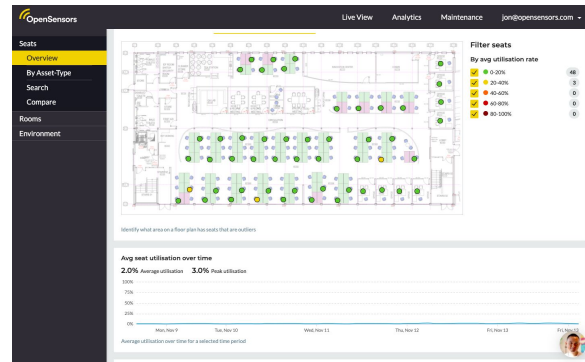
Powerful analytics software



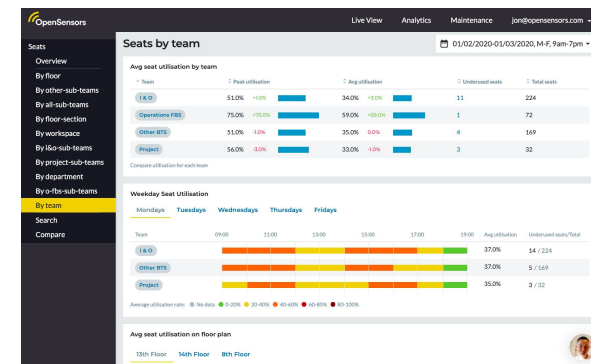
Data gathered and transmitted through LoRawan

Accessible data anywhere, anytime

Monitor social distancing



Compare workspaces and asset usage



 **OpenSensors**



# Thank you



## Connect with us

 [Opensensors.com](https://opensensors.com)

 [OpenSensors.io](https://OpenSensors.io)

 [OpenSensors.io](https://OpenSensors.io)

 [hello@opensensors.com](mailto:hello@opensensors.com)