

# **4 ways to use space booking and occupancy data to inform hybrid working**

Sharing best practices

# In today's session we'll cover

- Emerging trends in workplace strategy and design in response to COVID19
- The challenges that introducing hybrid working poses
- The role of occupancy, booking and environmental data in safely bringing employees back into the office



**David Attwell Thomas**  
Business Operations



# Today's speaker



## Yodit Stanton

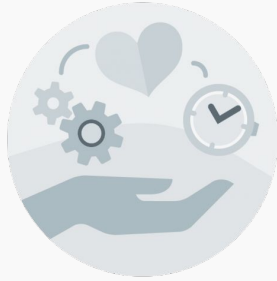
CEO & Founder of OpenSensors

Yodit has designed and built large scale data systems for various sectors and has played a key role in leading development teams to run critical trading and machine learning infrastructure for FTSE 500 companies such as Deutsche Bank, Man Investments, Nomura and Lehman Brothers.

With over two decades of experience as a Data and Machine Learning Engineer, Yodit specialises in predictive modeling for real time systems, social network analysis and middleware development.

# What trends are emerging globally as businesses reopen?

Employee behaviour & expectation

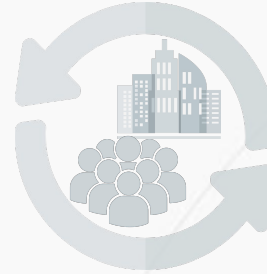


Remote work

Corporate responsibility

Training & development

Space restrictions & re-design



Health and safety

Introduction of hybrid work environments

# What are the main challenges when introducing hybrid work?

Allocating &  
designing space



Booking systems

Asset monitoring

Work rotations

Employee health &  
safety



Social distancing

Evidence based policy

Building health &  
environmentals

Real estate planning &  
strategy



Accommodate growth

Re-assess portfolio

Reduce carbon footprint

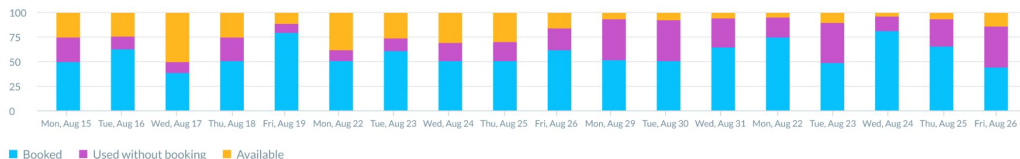
# The role of data in overcoming occupancy challenges

Bookings by tag group

Department	Workstation	Asset-group	Asset-type	Direction	Zone	Position
^ Department						
			⬆ No shows	⬆ Auto cancelled	⬆ Used w/out booking	⬆ Booked and used
Accounting			10.0%	15.0%	54.0%	20.5%  45 / 60
Business development			5.0%	9.0%	78.0%	10.5%  20 / 30
DevOps			30.0%	30.0%	50.0%	40.5%  19 / 40
Design			10.0%	11.0%	48.0%	20.5%  30 / 60
Product			21.0%	10.0%	36.0%	60.5%  90 / 98
Marketing			28.0%	15.0%	28.0%	73.5%  47 / 50
I&O			11.0%	12.0%	60.0%	30.5%  34 / 40

Capacity over time

65.3% Booked 21.5% Used without booking 13.2% Available

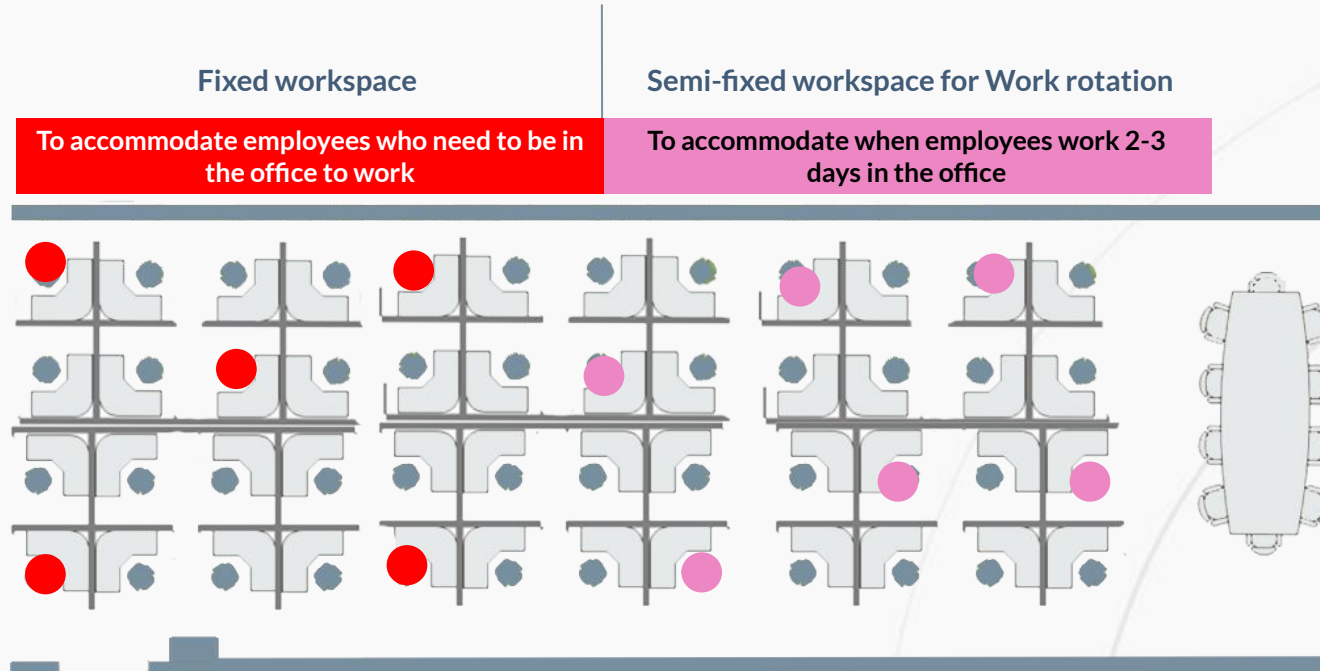


## Control & Forecast Capacity

Combining booking and occupancy data is critical to managing assets efficiently.

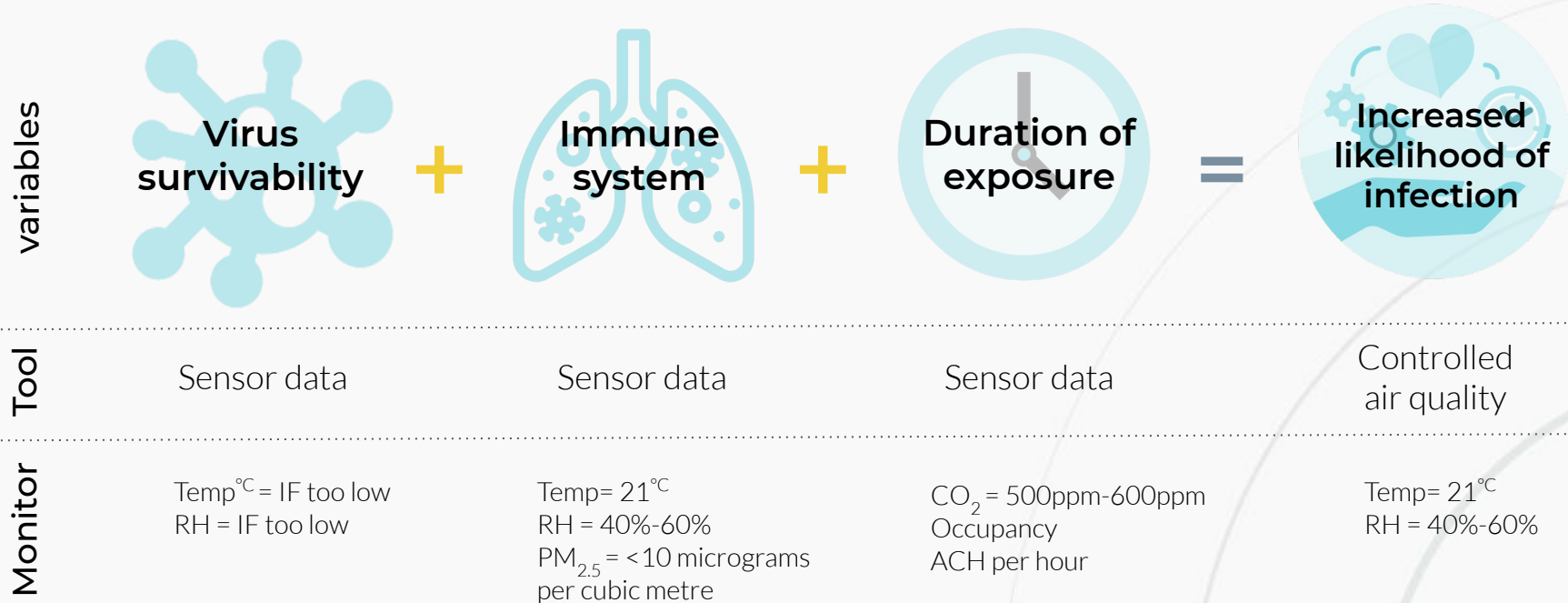
# Mobility profiles - Returning to the office

## Differing work patterns, rotation and usage



# How IAQ can increase the spread of viruses

- Key**
- °C = Temperature
  - RH = Relative humidity
  - CO<sub>2</sub> = Carbon dioxide
  - PM<sub>2.5</sub> = Particulate matter
  - ACH = Air circulation per hr



# Key takeaways

## Health and safety



Leverage booking, occupancy and environmental data in conjunction to ensure your workplace is safe for employees

## Changing demands on space



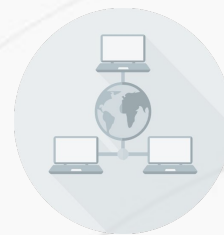
Provide your employees with the right variety of spaces by gathering occupancy and booking data to understand their behaviour

## Real estate strategy



Make the most out of your buildings and avoid unnecessary expansions by leveraging occupancy data in space planning

## Workspace booking systems



Enable your employees to seamlessly access the spaces they require, whilst remaining in control of social distancing guidelines

# Q&As



**Yodit Stanton**

yodit@opensensors.com

+44 (0)20 3868 4376



**David Attwell Thomas**

david.a@opensensors.com

+44 (0)20 3868 4376