



Predictions



How the workplace will evolve

Sharing insights from our Return to work survey May 2021

1000+ global respondents

In today's session we'll cover

- What impacts the pandemic has had on employees and businesses
- How changing expectations are driving demand and strategies
- Employee health and safety in the workplace
- How businesses are managing space requirements

Questions



Today's speaker



Emma Dutton

Leadership Development
Expert & Coach at Leopard LDL



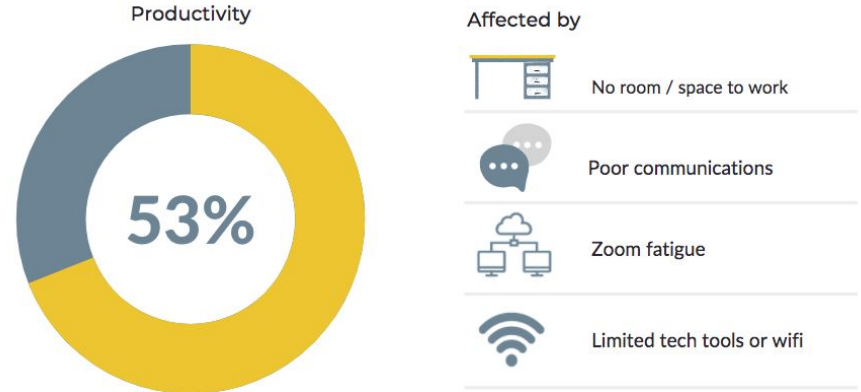
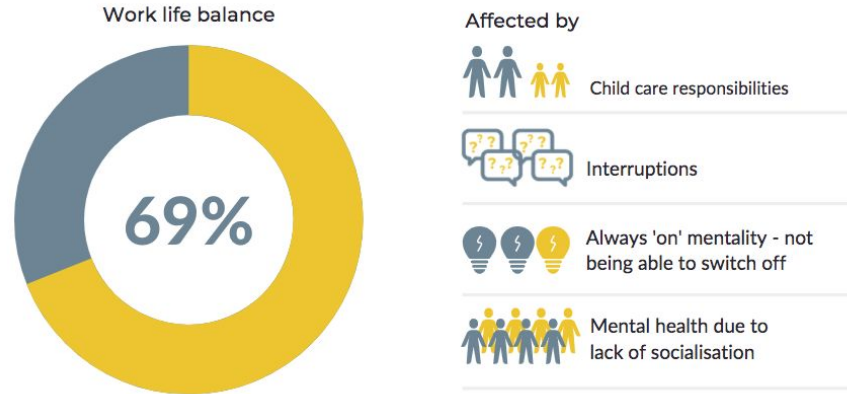
Yodit Stanton

CEO & Founder of
OpenSensors

The impact of the pandemic

Top challenges encountered working from home

“Space requirements will become complex with hybrid work models”

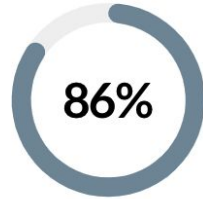


“People want to go back to the office but in a different way”

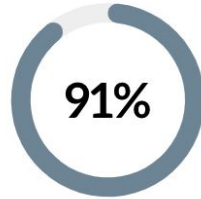
Changing expectations

Expectations of new ways of working

86% want flexible working options



UK employees want to work 1 day from home a week*



of respondents say their company is moving to do so

“Hybrid working is the natural acceleration of workplace trends”

*HubbleHQ research 2020

opensensors.com

“Hybrid working requires more reliance on technology due to its complexity”

Expectations of changes to office space

88%



expect office design to change

54%



want more collaboration spaces

50%



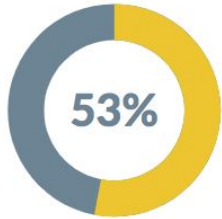
want more bookable spaces

LEOPARD
LEARNING, DEVELOPMENT AND LEADERSHIP

 **OpenSensors**

Employee health & safety in the workplace

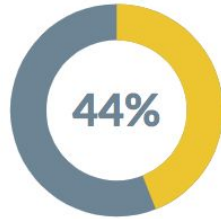
What companies have done to make is safer
to return to the office



Increased cleaning
regimes



Indoor air quality has the
greatest impact on health
& safety in the office



Integrated flexible work
rotations to manage
employee safety

“Monitoring indoor air quality
has the greatest impact on
employee safety”

opensensors.com

“Deploy environmental
sensors to gather data about
the air quality in your office”

Current environmental conditions
monitored



Temperature
67%



Humidity
54%



Carbon dioxide
40%



Particulate matter
40%

LEOPARD[®]
LEARNING, DEVELOPMENT AND LEADERSHIP

 **OpenSensors**

How businesses are managing space requirements

How companies gather data on space requirements

60% rely on manual survey to gather data



56% Gather employee feedback to inform office changes



“87% of Executives anticipate changes in their real estate strategy in the next 12 months”

opensensors.com

“Integrate space occupancy or booking software to manage space requirements”

Tools used to manage space capacity and social distancing



Occupancy and utilisation analytics software



Frequent internal communications



Seat and room booking systems

LEOPARD[®]
LEARNING, DEVELOPMENT AND LEADERSHIP

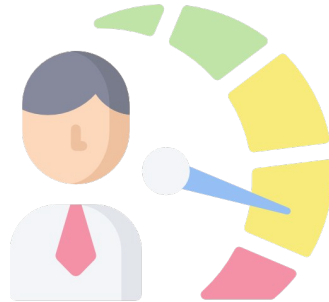
 **OpenSensors**

Key takeaways

No one size fits all approach



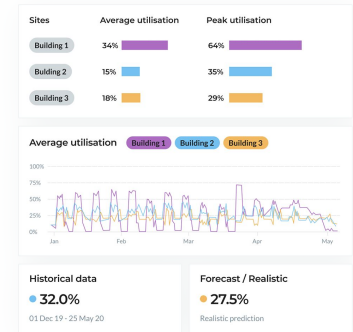
Changing expectations and the way we work



Gather data on space requirements and employee needs



Space occupancy and booking software



Join the conversation



Yodit Stanton

@ yodit@opensensors.com

+44 (0)20 3868 437



Emma Dutton

@ emma@leopard-ldl.co.uk

+44 7870 645 934



Thank you

Connect with us

 [Opensensors.com](https://opensensors.com)

 OpenSensors.io

 OpenSensors.io

 hello@opensensors.com

OpenSensors - Return to work survey May 2021 of over 1000+ global responses
Shaping the future of the workplace

LEOPARD[®]
LEARNING, DEVELOPMENT AND LEADERSHIP

 **OpenSensors**