

Balancing how much office space is needed

Insurance | Europe



GOAL

Improve the understanding of office utilisation and reduce lease cost.

Highlights



1,700 sensors

Desk, collaboration, shared zones, air quality



3 days

Short deployment turnaround



Bespoke reports

Including optimisation recommendations



Network

LoRawan operated working outside the customer's IT infrastructure

Delivering data powered workplace transformation solutions



www.opensensors.com

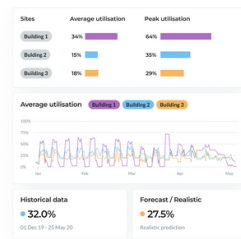


hello@opensensors.com

CHALLENGES

- Office building at capacity in European location
- High demand for more space yet observations depict large areas of empty spaces
- No data on current office utilisation to support forecasting plans as headcount predicted to grow by 20% over the next few years
- Upcoming decision to extend or cease overflow building lease
- No visibility of how employees interact and utilise workspaces

SOLUTION



Occupancy & utilisation analytics software

Providing accurate reports on how employees utilise and interact with spaces; and evidence based data to balance the need for more space.



Air quality analytics software

Measuring CO2, Temperature and Humidity, allowing Facility teams to adjust HVAC systems as needed.

BENEFITS

1

Visibility of over and underused workspaces

Facility teams can quickly see what desk spaces are available and re-allocate to new users efficiently. Flexibility to identify trends and opportunities to optimise utilisation.

2

Improved operational processes

Flexibility to adjust HVAC systems as needed to minimise energy consumption and create a productive environment for employees.

3

Space optimisation initiatives

Improved evidence led conversations with departments and stakeholders to implement space optimisation initiatives to maximise usage and collaborative working.

4

Reduced lease expenses

Data trends depicted average utilisation at 35% with heavily underutilised areas, allowing the Facilities & Real Estate teams make informed decision to cease leasing the overflow building.

