

Improving person to desk ratio

Perfumery & Fragrance | Europe



GOAL

Maximise the use of existing space and grow headcount by 20%.

Highlights

 **226 sensors**
Desk and meeting room sensors

 **2 days**
Short deployment turnaround

 **Bespoke reports**
Including optimisation recommendations

 **Network**
LoRawan operated working outside the customer's IT infrastructure

Delivering data powered workplace transformation solutions

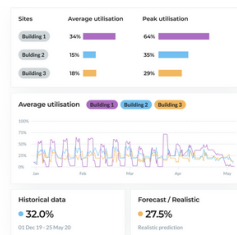
 www.opensensors.com

 hello@opensensors.com

CHALLENGES

- No occupancy data on new office layout where there is no assigned seating arrangement
- Pressure to grow headcount by 20% in existing office
- Pressure to find ways to use existing office space efficiently
- Observation data depict underutilised spaces with low occupancy

SOLUTION



Occupancy & utilisation analytics software

Providing accurate data on how employees utilise and interact with spaces, allowing Facilities teams to re-configure underused spaces to optimise utilisation.

BENEFITS

1 "I can check occupancy of every desk and meeting room by floor, by community, by day and by time. The data is represented in a way that is easy to understand".

2 Increased desk ratio to 1.2:1
Improved desk ratio from 1:1 to 1.2:1 and grow headcount by 20%.

3 Direct savings in cost per square metre
Increased efficiency in space management approach with direct impact on cost savings.

"I now have the information I need to make important decisions, such as whether to hire more staff, extend our offices to another floor or rent more space".

Senior Facilities Manager